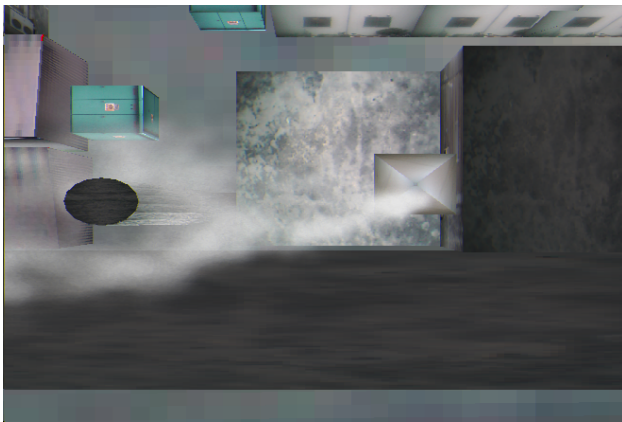


(a) Smoke in the strong wind
(side view, time step= 660, $u_{0,j,k} = 1.0, g_k = 18.0$)



(c) Smoke in the weak wind
(side view, time step= 200, $u_{0,j,k} = 1.0 \times 10^{-3}, g_k = 18.0$)

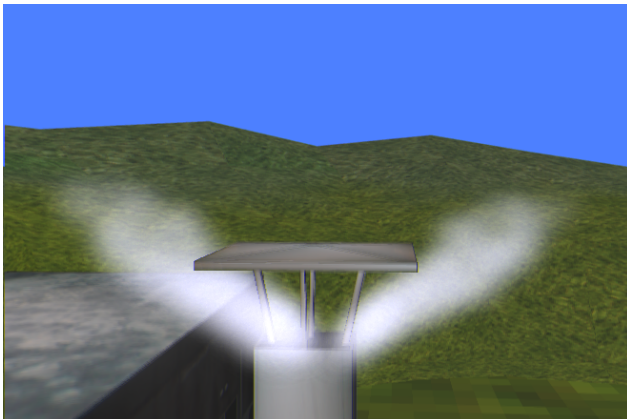


(b) Smoke in the strong wind
(top view, time step= 660, $u_{0,j,k} = 1.0, g_k = 18.0$)

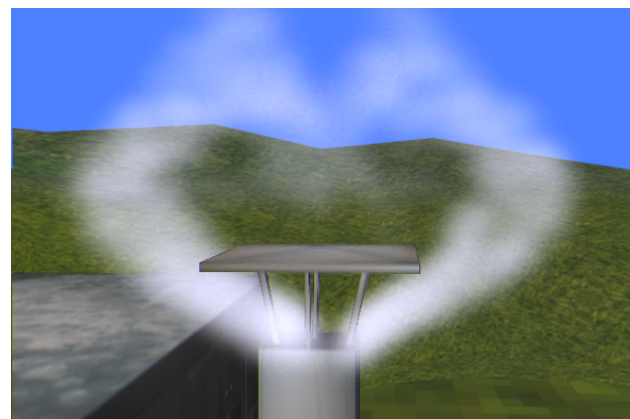


(d) Smoke in the weak wind
(side view, time step = 200, $u_{0,j,k} = 1.0 \times 10^{-3}, g_k = 10.0$)

Figure 12: Example(1).



(a)time step = 230



(b)time step = 700

Figure 13: Example(2).

